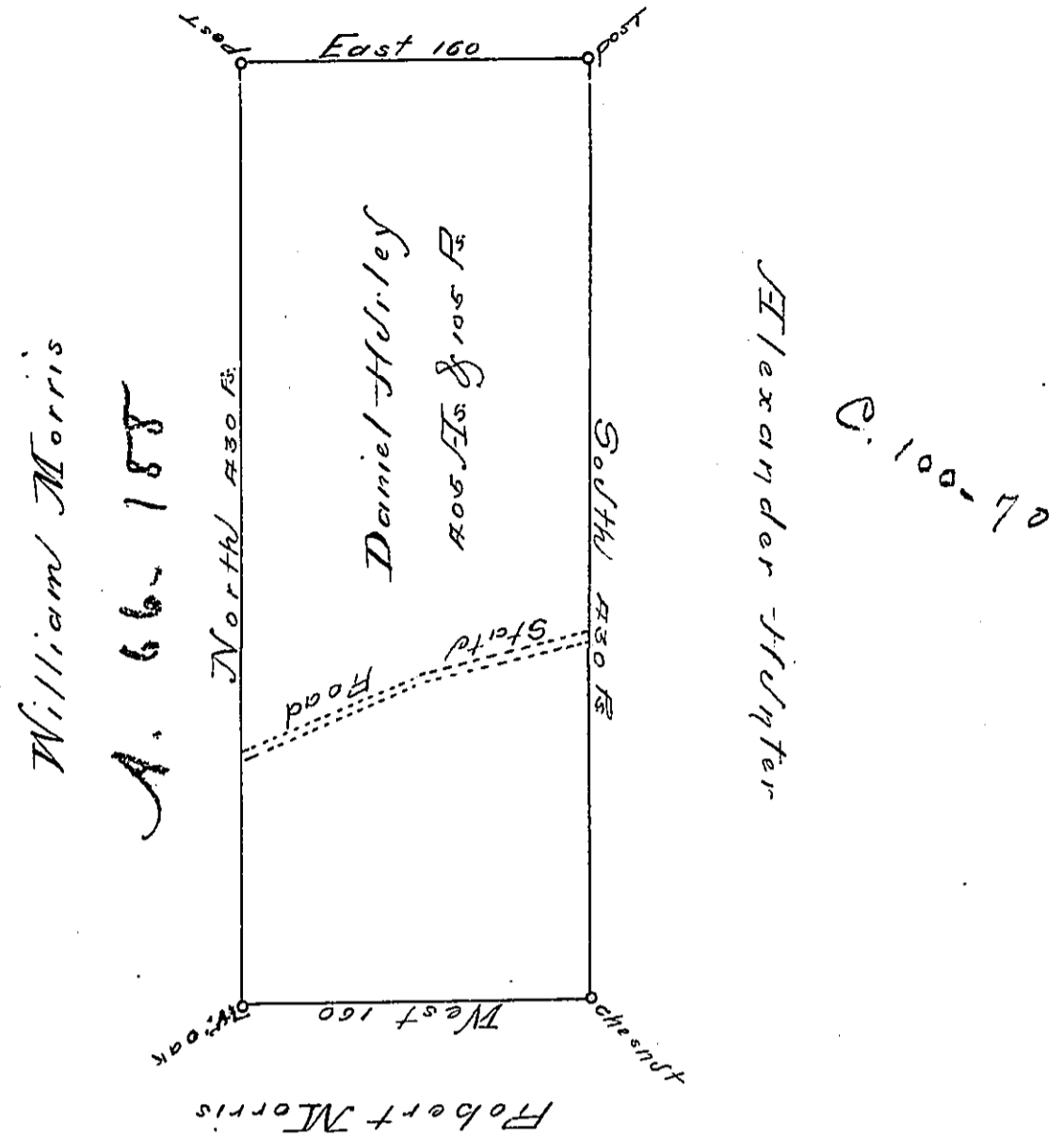


Jasper Ewing



Situate on the dividing Ridge which descends  
 the waters to Black Lick in Wheatfield Township,  
 County of Westmoreland and to Conemaugh in Quarmahoning  
 Township Bedford County containing 405 Acres & 105 perches  
 & allowance for Roads, Highways &c.

Survey for Daniel Hurdley the 29<sup>th</sup> day of Novem<sup>r</sup>. 1794  
 on Warrant dated the 3<sup>rd</sup> day of May 1793.

Daniel Woodhead Esq. S. J.

James Ross S. J.  
 George Woods Junr. S. J.

IN TESTIMONY that the above is a copy of the original remaining on file in the  
 Department of Internal Affairs of Pennsylvania, made con-  
 formably to an Act of Assembly approved the 16th day of  
 February, 1833, I have hereunto set my Hand and caused  
 the Seal of said Department to be affixed at Harrisburg, this

—thirtieth— day of —March— 1894

*John S. Stewart*  
 Secretary of Internal Affairs.